

BALDOR® • **RELIANCE**

Product Information Packet

L5023A

1HP,1725RPM,1PH,60HZ,56,X3524L,XPFC,F1

Part Detail							
Revision:	P	Status:	PRD/A	Change #:		Proprietary:	No
Type:	AC	Prod. Type:	3524L	Elec. Spec:	35WGY190	CD Diagram:	
Enclosure:	XPFC	Mfg Plant:		Mech. Spec:	35G485	Layout:	
Frame:	56	Mounting:	F1	Poles:	04	Created Date:	
Base:	RG	Rotation:	R	Insulation:	B	Eff. Date:	09-24-2008
Leads:	4#16 A&J,2#18 B P	Literature:	TH	Elec. Diagram:		Replaced By:	

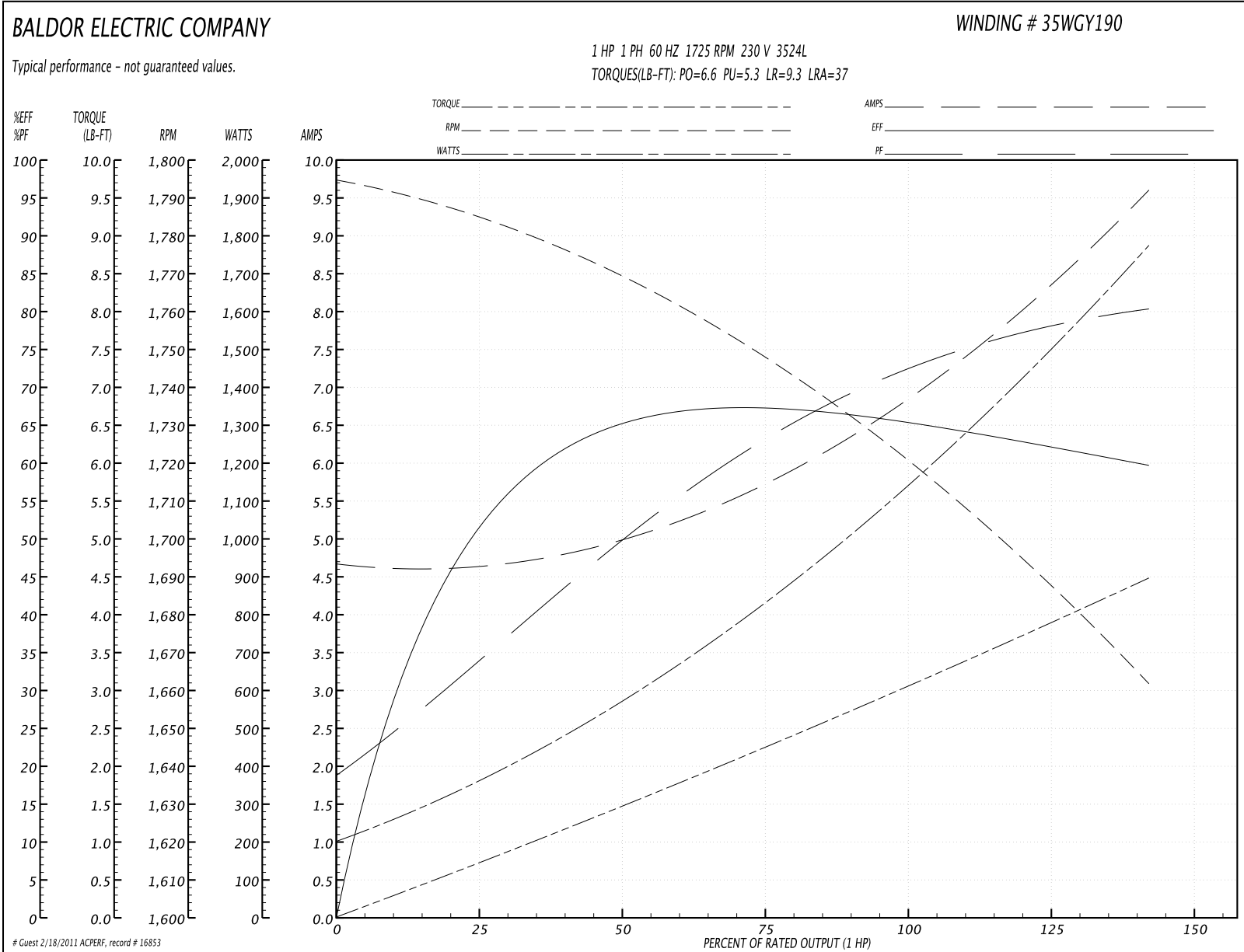
Nameplate NP0015XP							
NO.		CC					
SER.							
SPEC.	35G485Y190G1						
CAT.NO.	L5023A						
HP	1	T. CODE	T2C				
VOLTS	115/230						
AMPS	13/6.5						
RPM	1725						
HZ	60	PH	1	CL	B		
SER.F.	1.00	DES	L	CODE	K		
RATING	40C AMB-CONT						
FRAME	56	NEMA-NOM-EFF	67	PF	73		
USABLE AT 208V	N/A						

Parts List		
Part Number	Description	Quantity
SA025073	SA 35G485Y190G1	1.000 EA
RA021123	RA 35G485Y190G1	1.000 EA
TPMRJ22RX	THERMAL 1PH 0.75 AUT 120C	1.000 EA
EC1324A02	ELEC CAP, 324-389 MFD, 125V, 1.48D X 3.	2.000 EA
35CB3001A01SP	EXPL CONDUIT BOX, MACH, 1/2" PIPE TAP LE	1.000 EA
11XW1032G06	10-32 X .38, TAPTITE II, HEX WSHR SLTD U	1.000 EA
HW3001B01	BRASS CUP WASHER, FOR #8 SCREW	1.000 EA
35EP3700A01SP	FR ENDPLATE, XPFC	1.000 EA
51XW0832A07	8-32 X .44, TAPTITE II, HEX WSHR SLTD SE	2.000 EA
HW5100A03SP	WAVY WASHER (W1543-017)	1.000 EA
35EP3701A01	PU ENDPLATE, XPFC - 205 BRG	1.000 EA
XY3118A12	5/16-18 HEX NUT DIRECTIONAL SERRATION	4.000 EA
35FN3002A05SP	EXFN, PLASTIC, 6.376 OD, .638 ID	1.000 EA
51XB1214A16	12-14X1.00 HXWSSLD SERTYB	1.000 EA
51XW1032A06	10-32 X .38, TAPTITE II, HEX WSHR SLTD S	3.000 EA
35CB3500A01SP	CONDUIT BOX LID, MACH	1.000 EA
10XN2520A16	1/4-20 X 1 HEX HEAD CAP SCR, ZINC PLATED	4.000 EA
HW1001A25	LOCKWASHER 1/4, ZINC PLT .493 OD, .255 I	4.000 EA
HW2501D13SP	KEY, 3/16 SQ X 1.375	1.000 EA
HA7000A04	KEY RETAINER 0.625 DIA SHAFTS	1.000 EA
85XU0407A04	#4-7 X 1/4 DRIVE PIN	6.000 EA
NP0018	NP- XP CONDUIT BOX	1.000 EA
LB1011	LABEL XPROOF MTR W/ATO	1.000 EA
HA6003A52	CLAMP, CAPACITOR, WHITE ZINC PLATED	2.000 EA

Parts List (continued)		
Part Number	Description	Quantity
51XW0832A07	8-32 X .44, TAPTITE II, HEX WSHR SLTD SE	2.000 EA
MJ1000A02	GREASE, POLYREX EM EXXON	0.050 LB
35FH4005A01SP	IEC FH NO GREASER W/AUTOPHORETIC PRIMER	1.000 EA
MG1025Z20	ACTIVATOR WILKOFAS 060.32	0.010 GA
MG1025G29	PAINT 789.205 DARK GRAY METALLIC (USE W/	0.017 GA
HA3104A08	THRUBOLT-5/16-18X9.375 X X	4.000 EA
SP5055A11	MODEL 35 TYPE L STATIONARY SWITCH WITH L	1.000 EA
HA6001A01	THERMAL RETAINER (PLATED)	1.000 EA
12XF0632A06	6-32X3/8 TY F HEX HD SLT	2.000 EA
LB1118	LABEL,WARNING (ROLL LABEL)	1.000 EA
LB1125C01	STD (STOCK) CARTON LABEL BALDOR WITH FLA	1.000 EA
LC0008	1PH,DV,7-LEAD,THERMAL,CONNECTION DIAGRAM	1.000 EA
NP0015XP	25/CSA, CLI GP-D,CC	1.000 EA
36PA1000	PACK GROUP W/LB5001	1.000 EA

Performance Data at 230V, 60Hz, 1.0HP (Typical performance - Not guaranteed values)							
General Characteristics							
Full Load Torque:	3.0 LB-FT			Start Configuration:	DOL		
No-Load Current:	4.6 Amps			Break-Down Torque:	6.6 LB-FT		
Line-line Res. @ 25°C.:	2.76 Ohms A Ph / 1.86 Ohms B Ph			Pull-Up Torque:	5.3 LB-FT		
Temp. Rise @ Rated Load:	76 C			Locked-Rotor Torque:	9.3 LB-FT		
Temp. Rise @ S.F. Load:				Starting Current:	37.0 Amps		
Load Characteristics							
% of Rated Load	25	50	75	100	125	150	S.F.
Power Factor:	37.0	53.0	65.0	73.0	78.0	82.0	0.0
Efficiency:	51.1	63.0	66.8	66.6	63.9	58.9	0.0
Speed:	1781.0	1766.0	1749.0	1725.0	1697.0	1658.0	0.0
Line Amperes:	4.7	5.1	5.7	6.7	8.0	9.7	0.0

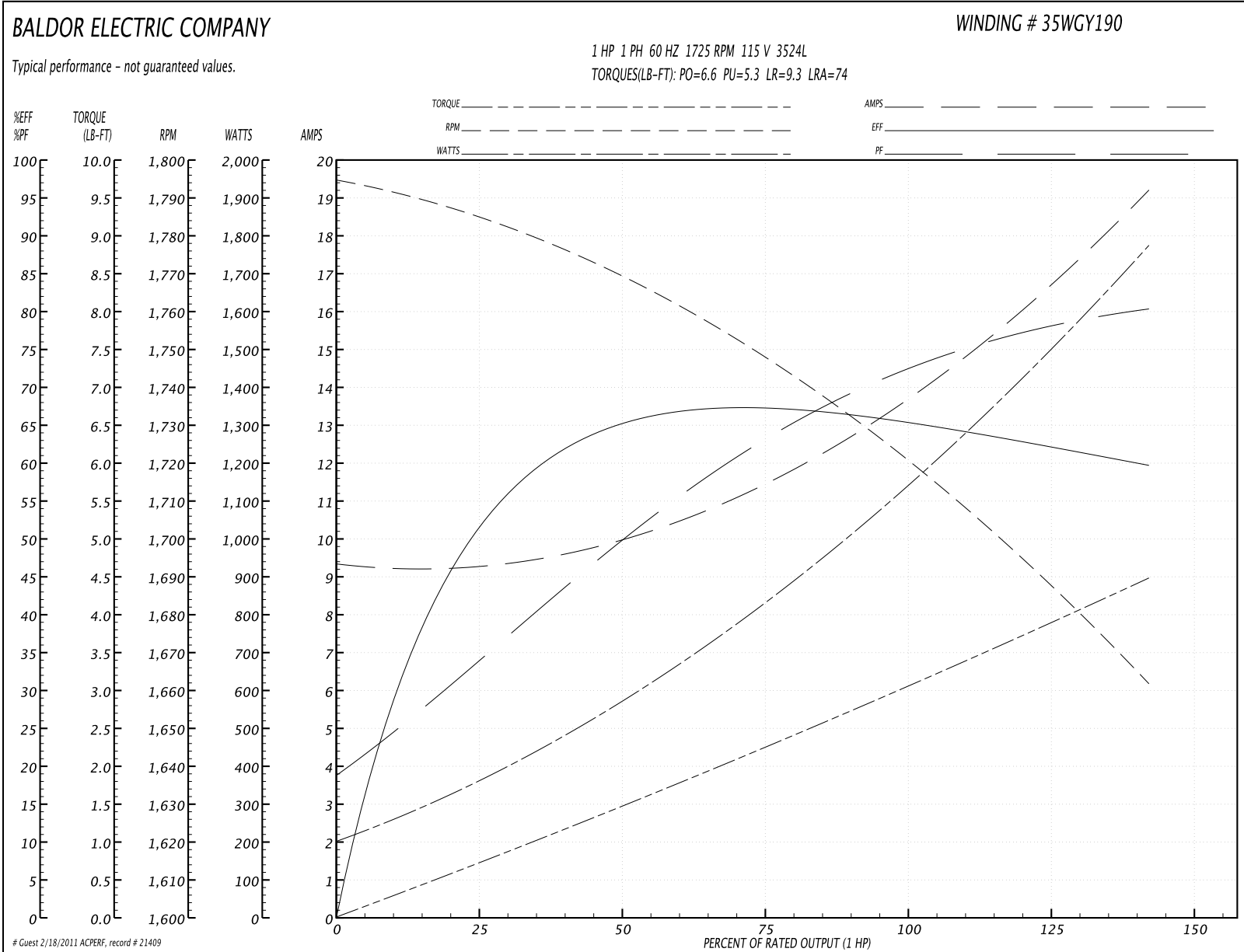
Performance Graph at 230V, 60Hz, 1.0HP Typical performance - Not guaranteed values

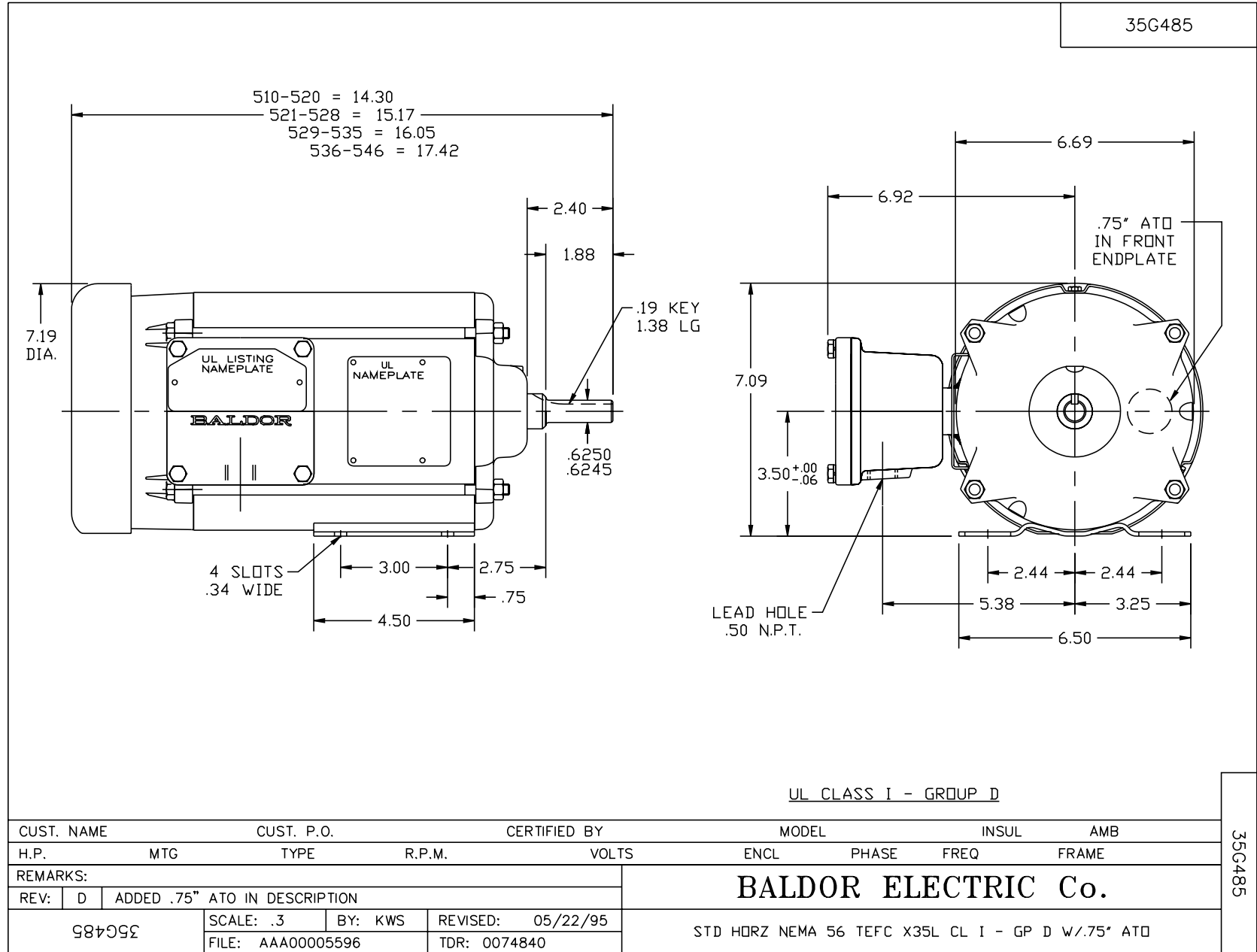


Performance Data at 115V, 60Hz, 1.0HP (Typical performance - Not guaranteed values)

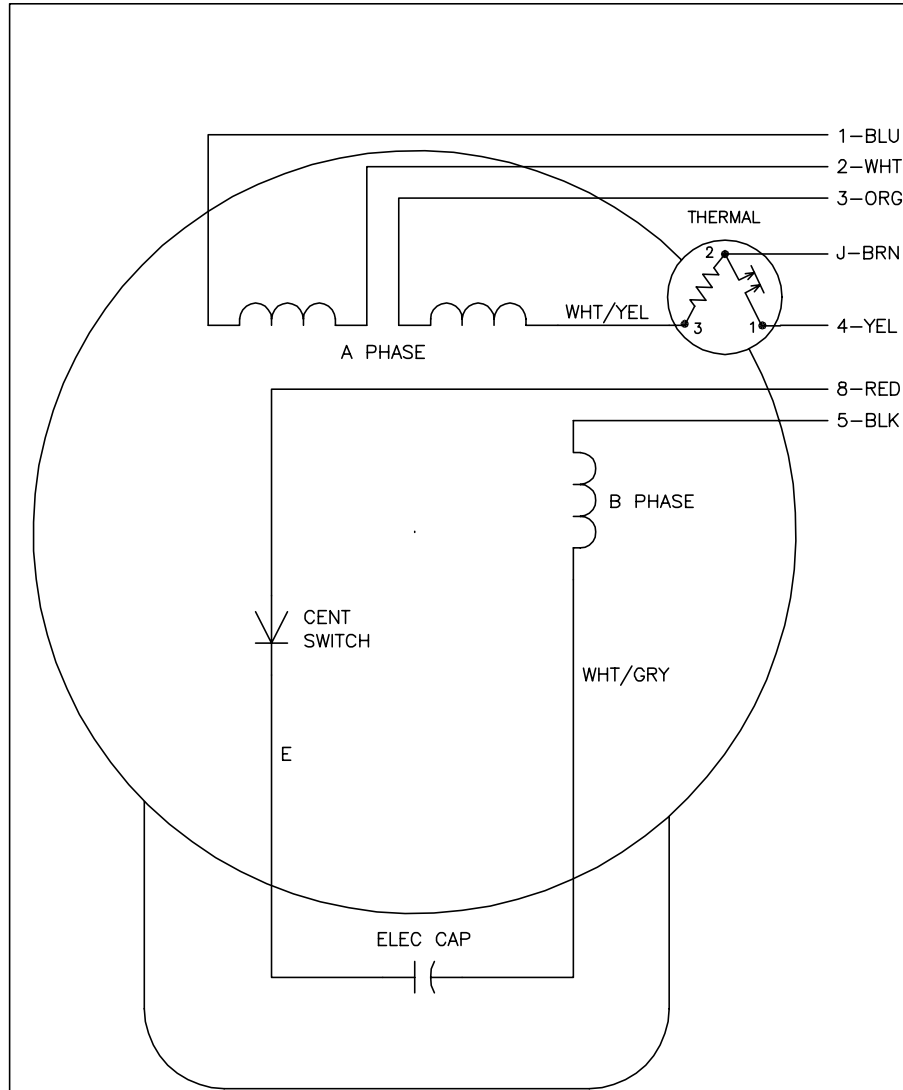
General Characteristics							
Full Load Torque:	3.0 LB-FT			Start Configuration:	DOL		
No-Load Current:	9.2 Amps			Break-Down Torque:	6.6 LB-FT		
Line-line Res. @ 25°C.:	2.76 Ohms A Ph / 1.86 Ohms B Ph			Pull-Up Torque:	5.3 LB-FT		
Temp. Rise @ Rated Load:	76 C			Locked-Rotor Torque:	9.3 LB-FT		
Temp. Rise @ S.F. Load:				Starting Current:	74.0 Amps		
Load Characteristics							
% of Rated Load	25	50	75	100	125	150	S.F.
Power Factor:	37.0	53.0	65.0	73.0	78.0	82.0	0.0
Efficiency:	51.1	63.0	66.8	66.6	63.9	58.9	0.0
Speed:	1781.0	1766.0	1749.0	1725.0	1697.0	1658.0	0.0
Line Amperes:	9.4	10.2	11.4	13.4	16.0	19.4	0.0

Performance Graph at 115V, 60Hz, 1.0HP Typical performance - Not guaranteed values





CD0008



	LINE A	LINE B	JOIN	JOIN
HIGH STD	1	4	2,3,8	J,5
HIGH OPP	1	4	2,3,5	J,8
LOW STD	1,3,8	4	-	2,J,5
LOW OPP	1,3,5	4	-	2,J,8

NOTES:

1. STANDARD ROTATION IS CCW FACING END OPPOSITE SHAFT EXTENSION.
2. MULTIPLE CAPACITORS ARE CONNECTED IN PARALLEL UNLESS OTHERWISE SPECIFIED.
3. LEAD COLORS ARE OPTIONAL. LEADS MUST ALWAYS BE NUMBERED AS SHOWN.

REV. DESC: REMOVE 2-TERMINAL THERMAL DETAIL, SEE CD0008A02		
REV. LTR: F	VERSION: 01	TDR: 000000360649
80000	FILE: \AAA\00007\408	REVISED: 10:56:54 04/18/2005
	MTL: -	BY: ENJOEPO

BALDOR ELECTRIC Co.

TYPE L, DV, REV, THERMAL, 7 LEADS

CD0008